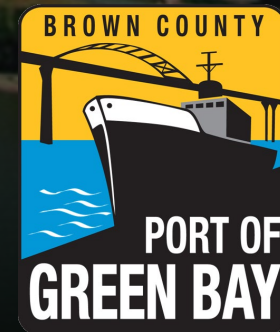




2021 Port Symposium





Saint Lawrence Seaway
Development Corporation's
Robert J. Lewis
2019 Pacesetter Award

Presented to

Port of Green Bay

*In Recognition of Increased International
Cargo Tonnage Shipped through the
Great Lakes St. Lawrence Seaway System*

C. H. Middlebrook
Craig Middlebrook
Deputy Administrator

2019 Tonnage Reports

- 2019 saw the **highest shipping total** since 2007
- 2,254,674 tons of cargo which was an **8% increase** from 2018
- Received the **Pacesetter Award** for the 2019 shipping season
- **177 vessels** passed through the Port

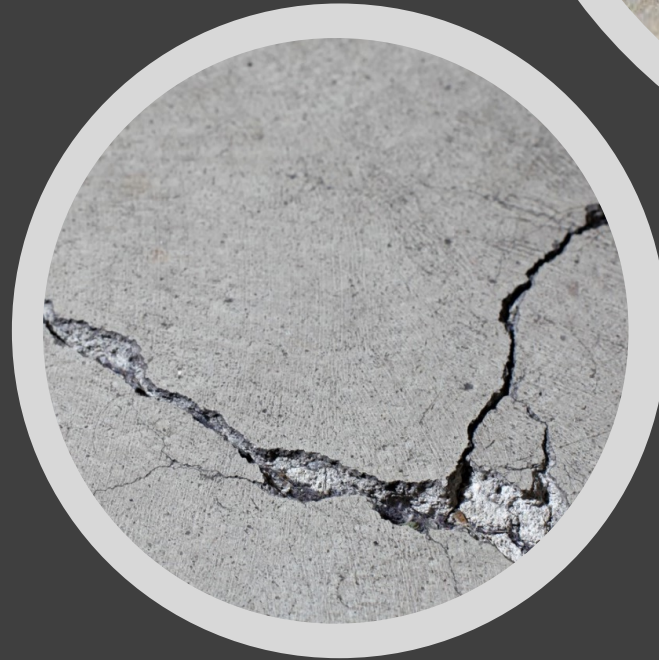
2020 Tonnage Reports

- 2020 shipping remained strong
- **1,922,608 tons** of cargo moved through the Port
 - 10-year average: 2,068,474MT
 - 17% decrease from 2019
- **164 vessels**
 - 10-year average: 185 vessels
 - 7% decrease from 2019



Leading Cargo Categories

- Limestone
 - 2019: 707,449MT
 - 2020: 571,184MT
 - **24% decrease** from 2019
- Cement
 - 2019: 303,815MT
 - 2020: 392,640MT
 - **29% increase** in 2020
- Salt
 - 2019: 392,302MT
 - 2020: 417,918MT
 - **7% increase** in 2020
- In addition to our leading cargo categories, the Port of Green Bay recently saw a new commodity, **carbon anodes**, which are used in foundries.



Pulliam Plant Acquisition

- In February, the Brown County Board approved a purchase agreement for the Port of Green Bay to acquire the former Pulliam Power Plant property. The \$2.7 million purchase was made possible with assistance from a **\$500,000 Wisconsin Economic Development Corporation grant**.
- The project is a collaborative effort involving the County, City, State, Federal government and private industries.
- The Pulliam Power Plant site is a newly acquired **44-acre parcel** situated at the mouth of the Fox River with deep water access, interstate connectivity and rail access.



Pulliam Plant Property Acquisition

- Preliminary environmental assessments have been completed. Work is underway for State and Federal agencies to identify and secure necessary permits and begin a timeline for property plans.
- Working with existing terminal operators on agreements that will result in **Port growth, new Port jobs and economic activity**. This is the first riverfront property acquisition by the Port in its history.
- Repurposing the Pulliam Plant property into a state-of-the-art port facility is expected to generate an economic impact of an **estimated \$87 million**.
- A variety of State and Federal grants and direct appropriations are being pursued to finance the **redevelopment** of the property.

Pulliam Plant Acquisition

- Redevelopment of the Pulliam Plant could include the relocation of the C. Reiss Coal Company, the current location of C. Reiss will then be utilized for Port growth opportunities.
- The Port intends to sell **9.74 acres** of the non-waterfront portion of the acquired property to GLC Minerals which has guaranteed to invest **\$7.5 million** and create **10 full-time positions** within five years.



Dredged Material Management

- As one of the most **heavily dredged ports** on the Great Lakes, the Port of Green Bay is continuously looking for ways in which to beneficially reuse dredge material.
- Dredge material is essentially topsoil lost from our farm fields and has economic value.
- A pilot composting project using dredged material is being considered in collaboration with the City of Green Bay.





State Dredged Material Legislation

- Reached out to Representatives and Senators in Northeast Wisconsin to draft beneficial reuse legislation.
- **Stakeholder groups have been assembled** including representatives of ports, environmental groups, DNR, Corps, Sea Grant, UW-Green Bay and others.
- Most recently, the Port has the support of Senator Cowles, Senator Jacque, Representative Kitchens and Representative Sortwell **to introduce a bill drafted by the Port** on beneficial reuse of dredged material statewide.

Federal Legislation

- The **Water Resources Development Act of 2020** provided new special budgetary treatment for amounts appropriated from the Harbor Maintenance Trust Fund (HMTF) meaning the Great Lakes Ports will have **adequate maintenance dredging funds**.
- Proposed FY2022 Budget includes **\$228 million for Army Corps of Engineers** various operations and maintenance projects in the Great Lakes including harbor dredging, breakwater, and jetty structure repairs.
- Additionally, this budget includes **\$500,000 allocated towards the Great Lakes Coastal Resiliency Study** to identify vulnerable coastal areas to improve shoreline resiliency.





Great Lakes Pilotage



- Under Coast Guard management, Great Lakes pilotage has become a runaway cost for **international trade** on the Great Lakes-St. Lawrence Seaway navigation system.
- In the last six years (2014-20), the overall cost of U.S. pilotage on the Great Lakes has more than **doubled** (\$12.8 million - \$28.2 million).
- The cost per pilot has increased by 53%. Unreasonable costs threaten the competitiveness of international commerce on the Seaway system.

2019 Tall Ships Festival

- In 2019, the Port welcomed the Tall Ships Festival to the port bringing **over 50,000 people** to the Port and generating **revenue** for the City of Green Bay.
- We are expecting to see them again when they return to the Great Lakes.



Looking ahead

- In partnership with the Greater Green Bay Visitors Bureau and City of Green Bay we are looking forward to Green Bay being a **regular cruise ship destination**. Cruise ships are planned for 2021 but are not confirmed.
- Projections are that next year there are going to be **eight cruise lines working on the Great Lakes**, all carrying high-end, international passengers.



Looking ahead

- Beneficial Reuse Legislation
 - We hope to see the drafted bill voted on and adopted by 2022.
 - Complete a compost demonstration project using dredged material, municipal compost, and manure.
- Pulliam Plant Acquisition
 - Continue working with Federal and State legislators to secure funding for redevelopment of the property.
 - Finalize purchase with GLC Minerals.
 - Complete the permitting process with the DNR.
- Seeing all of you at the 2022 Port Symposium!

Thank you for your continued support.
We look forward to seeing you at the
2022 Port Symposium!

